

Academic Matters

A Publication of the University of Wisconsin Colleges - Office of Academic Affairs

Volume 9, No. 2

December 2009



ACADEMIC AFFAIRS:

Gregory P. Lampe
Provost & Vice Chancellor

Lisa Seale
Interim Associate
Vice Chancellor

Sharon Brickl
Executive Assistant to Provost
& Newsletter Coordinator

**Cherie Hatlem, Registrar
& Director of Admissions**

**Rex Hieser, Coordinator
Professional Development**

Vicki Keegan
Director of Marketing

**Marilyn Krump, Director
Student Financial Aid**

**Laura Lee, Coordinator
Institutional Assessment**

Gregg Nettesheim
Senior Information Manager

Eric Smith
Grants Officer

Christel Taylor
Assistant ESFY Coordinator

**Tim Urbonya, Director
Continuing Ed & Extended Serv**

**Cary Komoto, Interim Director
Distance Education**

**Patti Wise, Interim
Assoc VC for Student Services &
Enrollment Management**

FROM THE PROVOST:



With final exams underway and the holidays less than a week away, it is hard to believe that another semester is nearly over. Soon, we will be entering a new year and with it, the hope that 2010 will hold great promise for our family, friends, colleagues, and students. I trust that the semester has been a rewarding one, and that you are looking forward to the year ahead.

I have now had the opportunity to visit three of our campuses. I thank all of the faculty, staff, and students who participated in those conversations. I deeply value the time we, in my role as Provost, had to spend together, engaging in respectful and, at times, impassioned dialogue about the UW Colleges' access mission, the quality of our academic program, the proposed Bachelor of Applied Arts and Science degree, the future of the UW Colleges Online program, the sustainability of the Associate of Arts and Science degree and other matters of importance to us all. I am pleased that I have had a chance to listen and respond directly to your questions and concerns. To date, these conversations have been far-ranging and informative. As I go from campus to campus, I am processing what I am learning and will use the information I have gathered to advance our mission of providing our students and our communities with a high quality, outstanding higher education. In the spring semester, I will be visiting the ten remaining campuses, and I am looking forward to continuing the conversation with all of you.

When you find some time over the holidays, I hope you will read this edition of *Academic Matters*. It is full of valuable information, including stories about the UW Colleges Library Council efforts in providing the UW Colleges community with access to the UW Digital Repository where faculty, staff, and students can publish their work, an update on the UW Colleges assessment program, professional development news, information about UW-Marshfield/Wood County Continuing

Education's Lifelong Learning Opportunities program for persons with disabilities, and an end of the year report on the UW Colleges Continuing Education program.

On behalf of all of us in the Office of Academic Affairs, I wish you a joyful holiday season, and a very happy and prosperous new year!



UW Colleges Library Council Assists in UW Digital Projects
By Lisa Seale

As part of my work, I am privileged to serve as the central office liaison to the UW Colleges Library Council. Scott Silet, Director, Library & Media Services, UW-Waukesha and Chair, UWC Library Council, describes the Council: "Founded in 1986, the UW Colleges Library Council is comprised of library academic staff members from all 13 UWC campuses and is dedicated to providing for the current and future informational needs of students, faculty, and staff throughout the institution. To that end, members of the Library Council work collaboratively together and with members of the UW System library group (CUWL) to provide the UW Colleges community with a rich collection of library materials, user services, and other research and curricular-driven resources."

Last year, I invited the Library Council to consider writing a word or two in *Academic Matters* about their work. Mark Rozmarynowski, Library Director at UW-Baraboo/Sauk County and member of the Council's Executive Committee, has kindly prepared the following piece about an exciting opportunity for our faculty, staff, and students to publish their work digitally. Please read on!

Minds@UW Colleges

Minds@UW, the UW Digital Repository, is available to help preserve and promote your research and teaching materials (<http://minds.wisconsin.edu>). If you are publishing a new article or conference paper, or have other original teaching and research materials, consider contributing an electronic copy of your pre-print, post-print, data sets, photos, etc. You may also upload working papers, learning objects, newsletters, presentations, and campus or departmental publications. All items will be electronically preserved, upgraded to new software versions as needed, and made easily accessible via Internet search engines. These items are also easily linkable from your D2L, faculty bio, or other Web pages.

The digital repository service is provided as a cooperative effort of the UW Colleges Library Council, the Council of University of Wisconsin Libraries (CUWL), and UW-Madison's Division of Information Technology (DOIT). UWC Library Council continues to work collaboratively with state and UW System library consortia to provide new research resources and services for faculty, staff, and students. Past projects have included the UW Shared Electronic Collection, Universal Borrowing and ILLiad interlibrary loan systems, SFX/Metalib metasearch and cross-linking services, and on-demand Document Delivery service for faculty. For more information about these projects, or for assistance with Minds@UW, contact your campus library staff.

FYI - The first two contributions to Minds@UW from the UW Colleges are:

Notes on Raymond Chandler's "Red Wind": <http://minds.wisconsin.edu/handle/1793/34186>, a post-print of an article by Dr. Marc Seals, UW-Baraboo/Sauk County English Department, published in Eureka Studies in Short Fiction.

La Femme Fatale Fausse: <http://minds.wisconsin.edu/handle/1793/34100>, an honors paper by Mary Rivard, UW-Baraboo/Sauk County student.

UW Colleges Assessment Activities – Fall 2009
By Laura Lee



The big news in the UW-Colleges' assessment program is the ongoing planning for an Assessment Summit that will occur in spring 2010. SAC members and some representative DACs and CACs will be meeting with the chairs, deans and associate deans to discuss the use of our data on student learning outcomes to guide future institutional development outside the classroom, in areas such as mentoring, professional development, advising and curriculum. We will be bringing in a keynote speaker from the Higher Learning Commission to speak on this subject, as well as lead small group discussions. We hope for some great outcomes to result from this meeting.

The DACs have not met since August 2009. However, the departments are hard at work this semester assessing Analytic Skills and Aesthetic Skills in highly-enrolled courses. In the spring, assessment will focus on courses with higher percentages of sophomore-level students. The SAC and DACs will be meeting on January 22, 2010, to discuss the fall data and spring plans.

The SAC met with the CACs just before Thanksgiving via a Wisline meeting to discuss progress on the campuses. We are continually pleased with how quickly the campus assessment programs have developed. Several campuses are assessing how well they are serving specific groups of students. Some examples of this include assessment of evening degree programs, tutoring programs/success labs, accuracy of placement exams and student advising. Other campuses have taken on more generalized tasks, including surveys of students' educational goals, workshops on writing measurable assessment goals, and assessments of the implementation of campus themes and campus-wide reads. SAC will be meeting with the CACs again in the spring for updates on how these assessment programs are progressing.

As always, if you have any questions or comments on the assessment process, please feel free to contact your CAC, DAC or myself.



Professional Development News
By Rex Hieser

Provost Lampe recently approved recommendations of the Senate Professional Development Committee for participation in several UW Colleges and UW System programs. The following people received sabbaticals for 2010-11: Teresa Gonya (UW-Fox, Biology), Academic Year 2010-11; Kathleen Bubinas (UW-Waukesha, Anthropology/Sociology), Academic Year, 2010-11; Tom Klubertanz (UW-Rock County, Biology), Fall 2010.

The Wisconsin Teaching Fellows program is sponsored by the UW System Office of Professional and Instructional Development. Fellows will spend the 2010-11 academic year working on Scholarship of Teaching and Learning (SoTL) research projects. The UW Colleges participants are Kathy Phillippi-Immel (UW-Fox Valley, Psychology) and Kirthi Premadasa (UW-Marathon County, Mathematics).

The UW Colleges Chancellor's Teaching Fellows Program supports faculty and instructional academic staff as they work on SoTL projects in a manner similar to the Wisconsin Teaching Fellows Program. Rachel Knighten (UW-Fox Valley, World Languages) and Sarah Bennett, (UW-Barron County, Mathematics) are the UW Colleges Chancellor's Teaching Fellows for 2010-11.



***UW-Marshfield/Wood County Provides Lifelong Enrichment
For Those with Special Needs***

When the University of Wisconsin-Marshfield/Wood County Continuing Education department started the Lifelong Learning Opportunities (LLO) program for persons with disabilities in 2004, it recognized a need in the community was actually a golden opportunity for students and the campus. Today the program provides educational and social activities for more than 75 differently abled individuals and their caregivers and families, connecting them with college and high school students, faculty and staff.



Amy and April enjoy drumming lessons at UW-Marshfield/Wood County

The program, which is supported by the local United Way, strives to increase self-sufficiency, improve life skills, enhance communication and provide for safe activities for the participants, who meet on campus once a month throughout the year. UW-Marshfield/Wood County education majors, particularly those with an emphasis or concentration in special education, benefit from the program as they gain real life experience in working with a diverse population with a wide-range of disabilities.

The LLO program, which caters to people ages 16 and older, serves the greater Marshfield area including Arpin, Auburndale, Pittsville, Stratford and Spencer.

LLO was started when UWM/WC Continuing Education saw a need in the community for adults with disabilities to have an opportunity for social interaction and lifelong learning. According to surveys from the National Organization on Disability/Harris Interactive and the Department of Health and Human

Services, people with disabilities are less likely than the non-disabled to participate in a range of significant social activities. According to the data, only 36 percent of disabled adults participated in social /leisure activities compared to 62 percent of those without disabilities. Some 35 percent of Americans with disabilities say they are completely uninvolved in their communities, compared to 21 percent of those without disabilities. These factors impact the quality of life for people with disabilities with only 34 percent saying they are very satisfied with their life compared to 61 percent of those without disabilities.



Dwayne delights in outdoor activities at the summer picnic

“Considering the national statistics and the disabled population in the Marshfield area, it was clear that there was an opportunity to provide social and educational programming for this population,” said Michelle Boernke, Continuing Education Director at UW-Marshfield/Wood County. “The exciting part was engaging UW students, staff, faculty, high school students and the technical college students in the program. LLO offers the entire community a chance to come together. Whether you have a disability or not does not matter. This is a program that focuses on your ability.”

Each year, LLO serves approximately 75 unduplicated individuals and caregivers and family members. The majority of LLO participants have developmental disabilities or Down syndrome. There is a range of abilities in the group. Many work at Opportunity Development Center and Community Resource Programs (CRP Ceramics), while others are more limited and live in a group home setting. The LLO program provides a safe environment and provides appropriate educational endeavors for the participants.

Programs include nutrition, fitness, art, music, dance, puppeteering, history, safety, athletics and more. “Imagine never having the chance to hold a paint brush, crack an egg, throw a Frisbee, or be part of a performance” said Boernke. “Many of the things we take for granted in life are experiences many LLO participants have never had. The LLO program brings real learning and experiences to those who may not have the chance.”

The program has an advisory board which includes local care providers, educators, employers and parents in a collaborative effort to assist in planning activities. LLO has networked with the Aging and Disability Resource Center, Community Care of Central Wisconsin, Wood County Social Services and the Wood County and Tri-County Transitional Advisory Councils to share information on the program. This is truly a community program using campus resources to meet a community need.

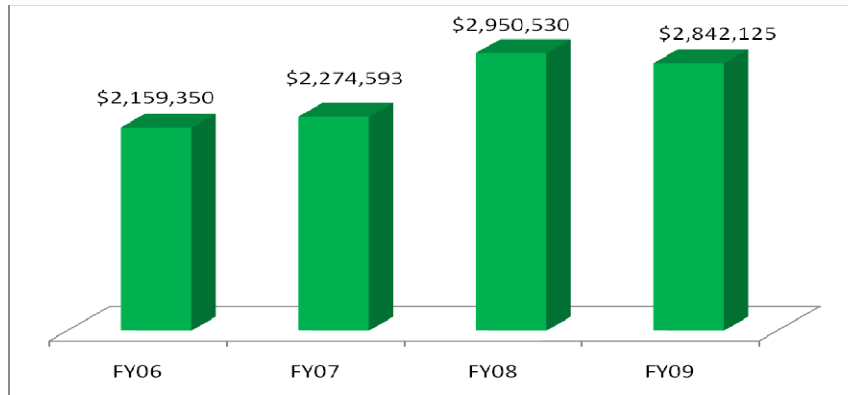
Continuing Education FY09 Year-End Report
By Tim Urbonya



Financially and programmatically, UW Colleges continuing education held its ground in 2008-09 amidst an economic environment that negatively impacted enrollments, run rates and revenues. Buoyed by an expansion of credit outreach programming at several campuses, total revenue remained steady at \$2.95 million, up slightly from \$2.84 million in FY08. Meanwhile, discounting the \$163,000 in carry forward transferred to support main campus operations as part

of a pilot residual sharing program initiated last year on three campuses, CE operations reported a combined total operating net of about \$3,000. The revenue transfer also contributed to a decline in carry forward balance to a combined \$756,342 from \$906,124 the previous year.

CE Revenues

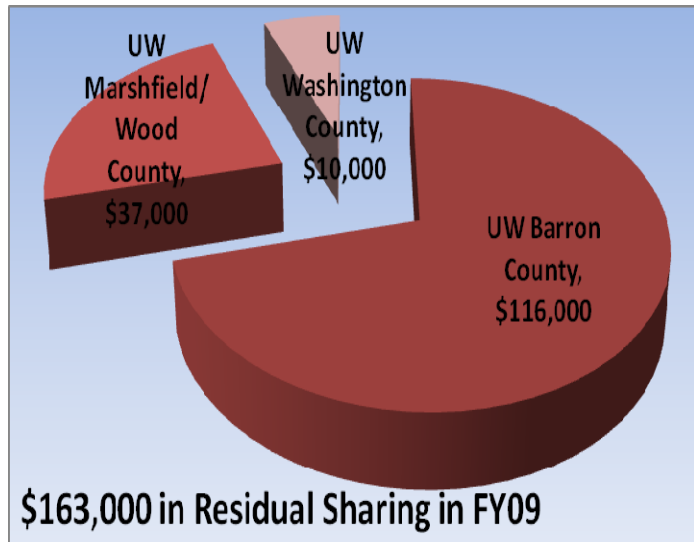


The weaker numbers, however, do not tell the complete story in FY09. Beyond the numbers, a favorable trend in has been the growing level of engagement between the campuses and their Continuing Education departments. Across the Colleges, CE programs are becoming an integral part of the campus strategy, as the following examples illustrate:

- At UW-Washington County, an offsite adult outreach accelerated degree cohort program was developed in FY09 and successfully launched this fall. A second cohort at another off-site location is currently being considered for launch this year.
- At UW-Rock County, a successful high school credit outreach program at Beloit Memorial High School is now entering its second year of providing a critical proving ground for a multicultural population of future first generation college students.
- UW-Marshfield/Wood County CE is overseeing the Fast Track accelerated program and offering a number of additional credit outreach courses.
- Meanwhile, at UW-Waukesha, continuing education has developed and inaugurated the first Winterim program that targets students from the comprehensives home on semester break. The CE department is also preparing to launch a fifth-year high school credit outreach program for graduates at St.
- John's Northwest Military Academy who are waiting to enter U.S. military academies.

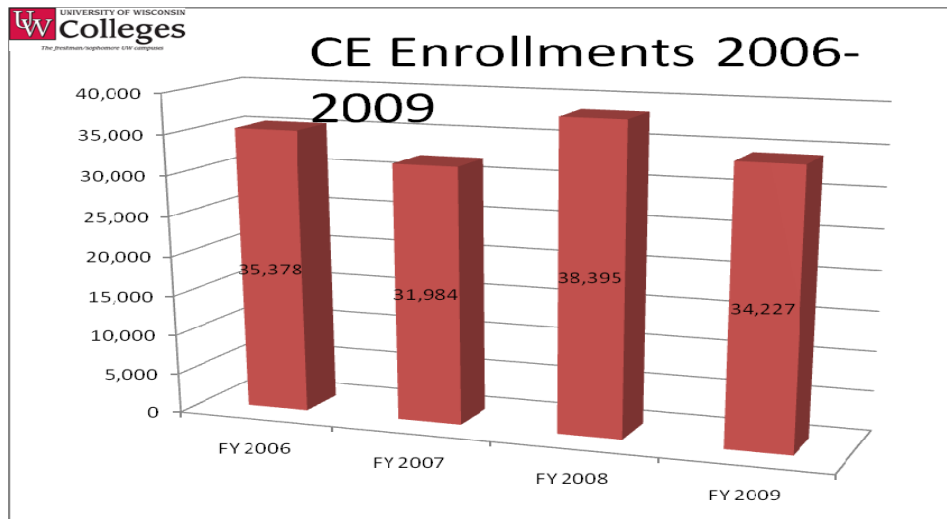
Not coincidentally, three of the four campuses – UW-Washington County, UW-Marshfield and UW-Rock County – are those that have received additional funding support from UW-Extension office of Continuing Education Outreach and E-Learning over the past three years as part of an initiative to establish full-time programmers and expand credit outreach. This support has been critical. All three are now full-time established positions and each of the three departments, as well as UW-Waukesha, are likely to add staff in the coming year.

It should also be noted that two of the four campuses mentioned – Marshfield and Washington County – are part of the CE Residual Sharing Pilot initiated in the summer of 2008 that provided more than \$163,000 in support of general campus operations in the first year. Pilot campuses now have an established formula for benefitting financially from the success of continuing education programs.



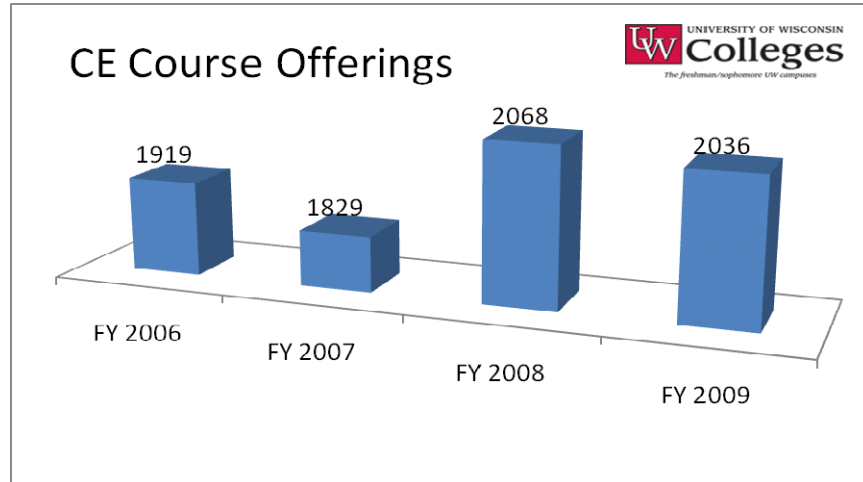
Enrollment

Enrollments declined in 2008-09 to 34,227, down 9 percent from the previous record-breaking year.

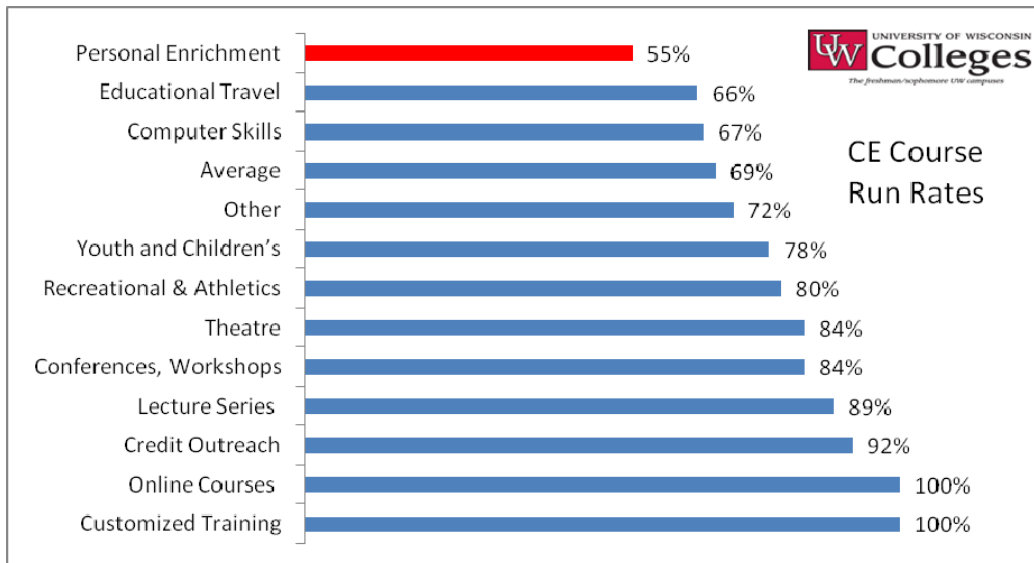


Program Offerings

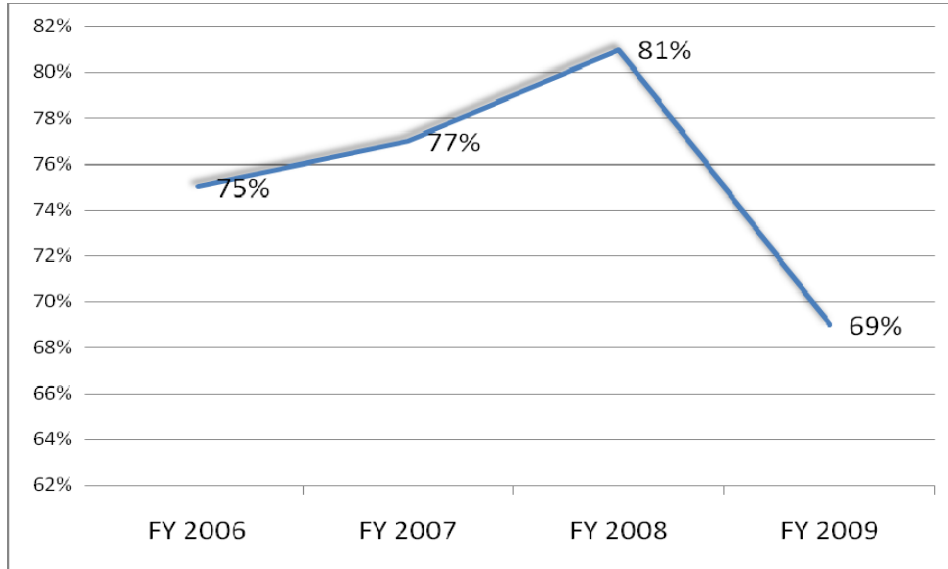
The 13 UW Colleges campuses offered 2036 programs during 2007-08, down slightly from the record 2068 programs offered the year before.



While personal enrichment enrichment courses dominated CE course offerings, this category of programming also led the way in cancellations. Nearly half of all personal enrichment courses were canceled last year.



This poor showing by enrichment programming led to a precipitous decline in the overall program run rate to 69% in FY09.



*Happy Holidays from
Academic Affairs*



Front row left to right: Pat Fellows, Cary Komoto, Vicki Keegan and Lisa Seale.
Back row: Karen Franker, Greg Lampe, Tim Urbonya, Gregg Nettesheim, Sharon
Brickl. Not shown: Cherie Hatlem, Rex Hieser, Laura Lee, Eric Smith, Chris
Taylor, and Patti Wise.