

UW-Colleges New Freshman Retention Summary



About this retention summary:

This report summarizes retention to a second year for new freshmen who began enrollment at the UW Colleges in the fall terms 2004 thru 2008. The report includes a series of sub-reports based on student characteristics.

Each of the retention sub-reports includes first term course load as a criteria either for inclusion in the report or for placement into groups within the sub-report. This builds on years of retention reporting showing that course load has a significant impact on student retention. Most of the sub-reports exclude students beginning the first term of enrollment with fewer than six credits.

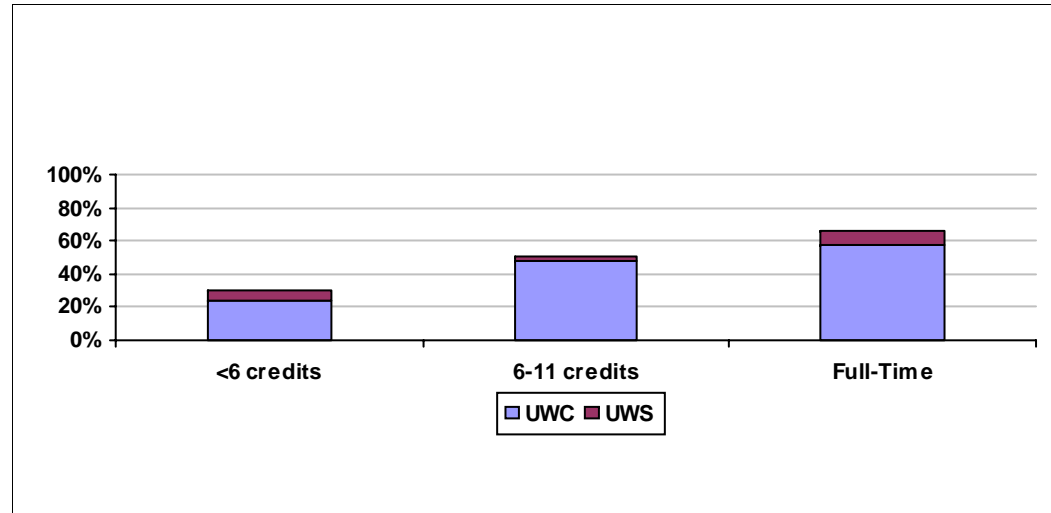
Please note the initial population sizes for the various groups. In many cases the populations are too small to allow meaningful conclusions about retention. They are included for the sake of consistency in structuring reports.

Questions about this report should be directed to Gregg Nettesheim in the Office of Academic Affairs.

Fall 2008 to Fall 2009

	1st Yr. Fall Term	1st Yr. Spring		2nd Yr. Fall Term		
	<u>Initial Count</u>	% retained		% retained		
		<u>UWC*</u>	<u>UWS**</u>	<u>UWC*</u>	<u>UWS**</u>	<u>Total</u>
<6 credits	121	33%	3%	24%	6%	30%
6-11 credits	307	66%	1%	48%	3%	51%
Full-Time	3672	85%	2%	58%	8%	66%

Students Retained to a 2nd Year - Fall 2008 to Fall 2009

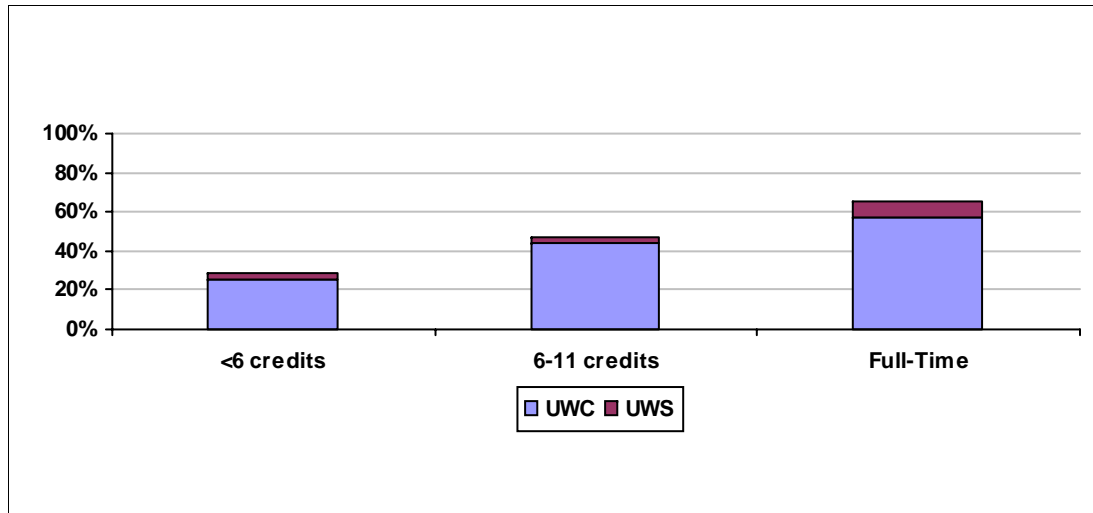


Note population sizes (Initial Counts) shown in the table above

Five Year Average Fall to Fall Retention for Fall Terms 2004-2008

	1st Yr. Fall Term	1st Yr. Spring		2nd Yr. Fall Term		
	<u>Initial Count</u>	% retained		% retained		
		<u>UWC*</u>	<u>UWS**</u>	<u>UWC*</u>	<u>UWS**</u>	<u>Total</u>
<6 credits	654	33%	2%	25%	3%	28%
6-11 credits	1696	66%	1%	44%	3%	47%
Full-Time	18300	84%	2%	57%	9%	65%

Students Retained to a 2nd Year (Fall to Fall) - Five Year Average

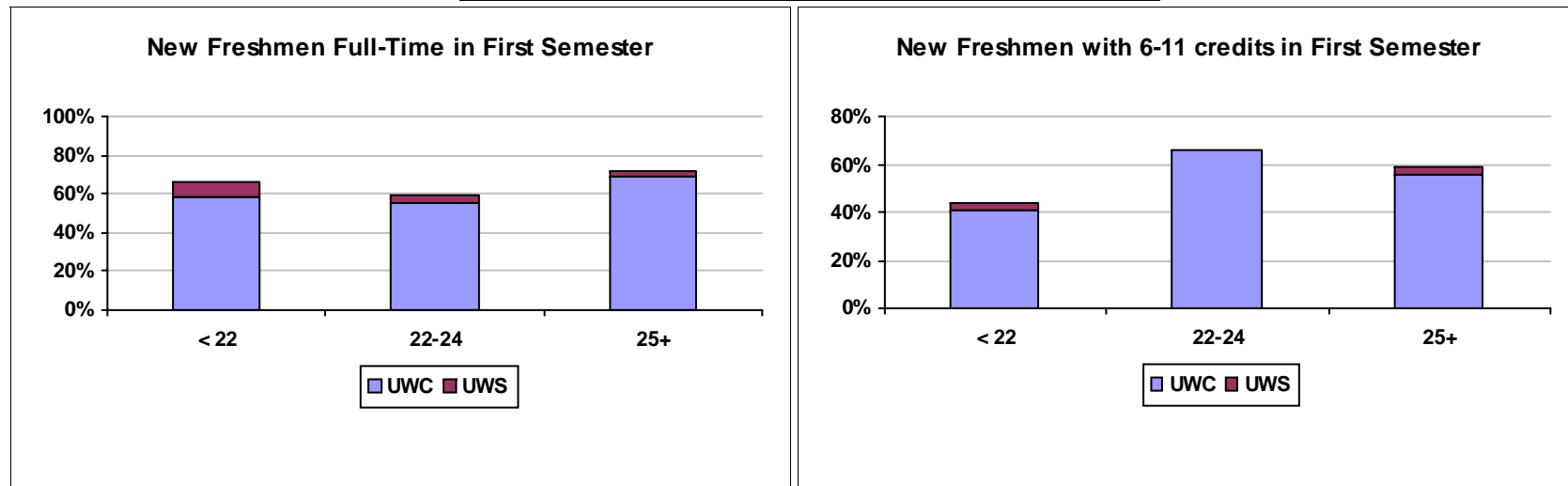


Note population sizes (Initial Counts) shown in the table above

Fall 2008 to Fall 2009

		1st Yr. Fall Term	1st Yr. Spring		2nd Yr. Fall Term		
		Initial Count	% retained		% retained		
			UWC*	UWS**	UWC*	UWS**	Total
Full-Time	< 22	3461	85%	2%	58%	8%	66%
	22-24	96	83%	2%	55%	4%	59%
	25+	114	92%	0%	69%	3%	72%
6-11 credits	< 22	178	59%	1%	40%	3%	44%
	22-24	29	76%	0%	66%	0%	66%
	25+	100	77%	0%	56%	3%	59%

Students Retained to a 2nd Year - Fall 2008 to Fall 2009

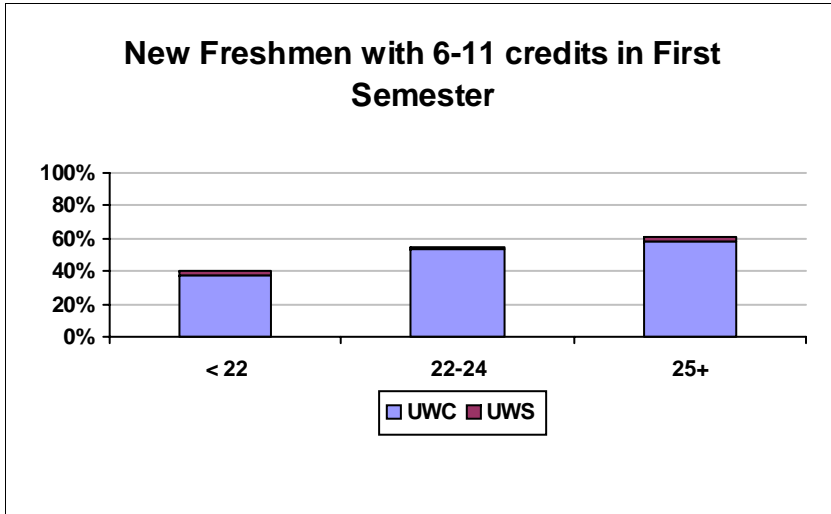
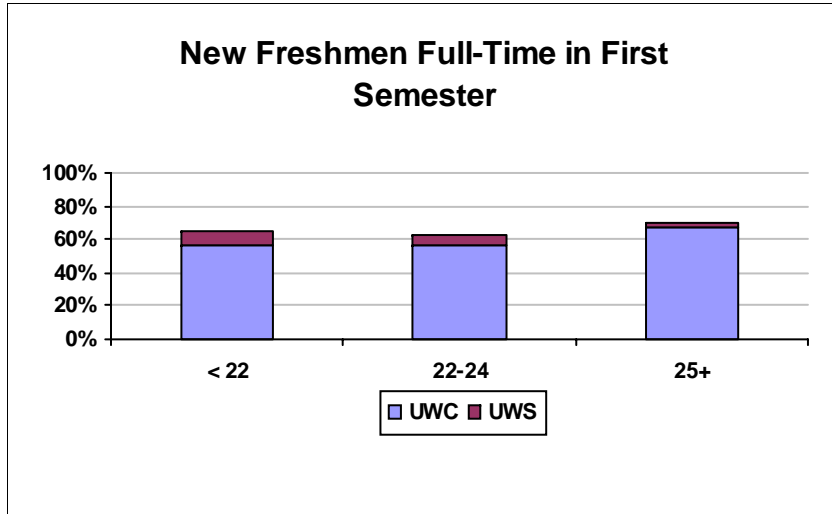


Note population sizes (Initial Counts) shown in the table above

Five Year Average Fall to Fall Retention for Fall Terms 2004-2008

		1st Yr. Fall Term	1st Yr. Spring		2nd Yr. Fall Term		
		Initial Count	% retained		% retained		
			UWC*	UWS**	UWC*	UWS**	Total
Full-Time	< 22	17269	84%	2%	56%	9%	65%
	22-24	480	81%	1%	56%	6%	62%
	25+	547	88%	0%	67%	3%	70%
6-11 credits	< 22	1088	60%	1%	37%	3%	41%
	22-24	190	72%	1%	53%	1%	54%
	25+	414	78%	1%	58%	3%	61%

Students Retained to a 2nd Year (Fall to Fall) - Five Year Average



Note population sizes (Initial Counts) shown in the table above

Fall 2008 to Fall 2009

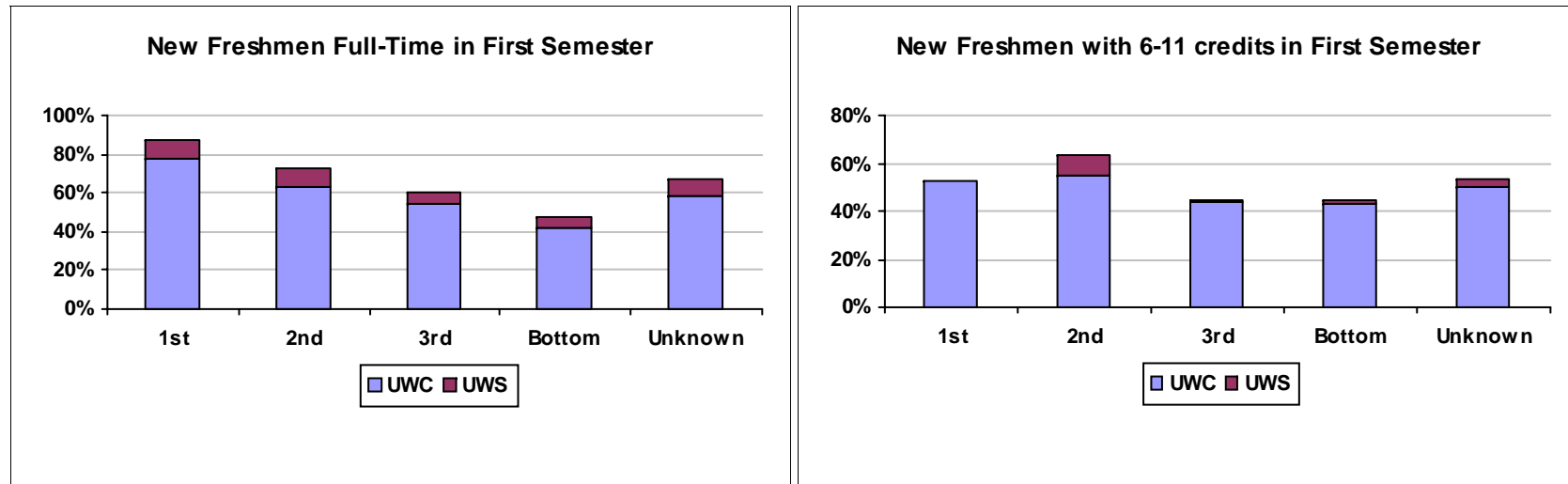
1st Yr. Fall Term

1st Yr. Spring

2nd Yr. Fall Term

		Initial Count	% retained		% retained		Total
			UWC*	UWS**	UWC*	UWS**	
Full-Time	1st	512	93%	1%	78%	10%	88%
	2nd	952	90%	1%	63%	9%	72%
	3rd	1080	83%	2%	54%	6%	60%
	Bottom	540	76%	1%	41%	6%	47%
	Unknown	588	83%	4%	58%	9%	67%
6-11 credits	1st	21	90%	0%	52%	0%	52%
	2nd	49	82%	0%	55%	8%	63%
	3rd	80	69%	0%	44%	1%	45%
	Bottom	63	51%	0%	43%	2%	44%
	Unknown	94	62%	2%	50%	3%	53%

Students Retained to a 2nd Year - Fall 2008 to Fall 2009

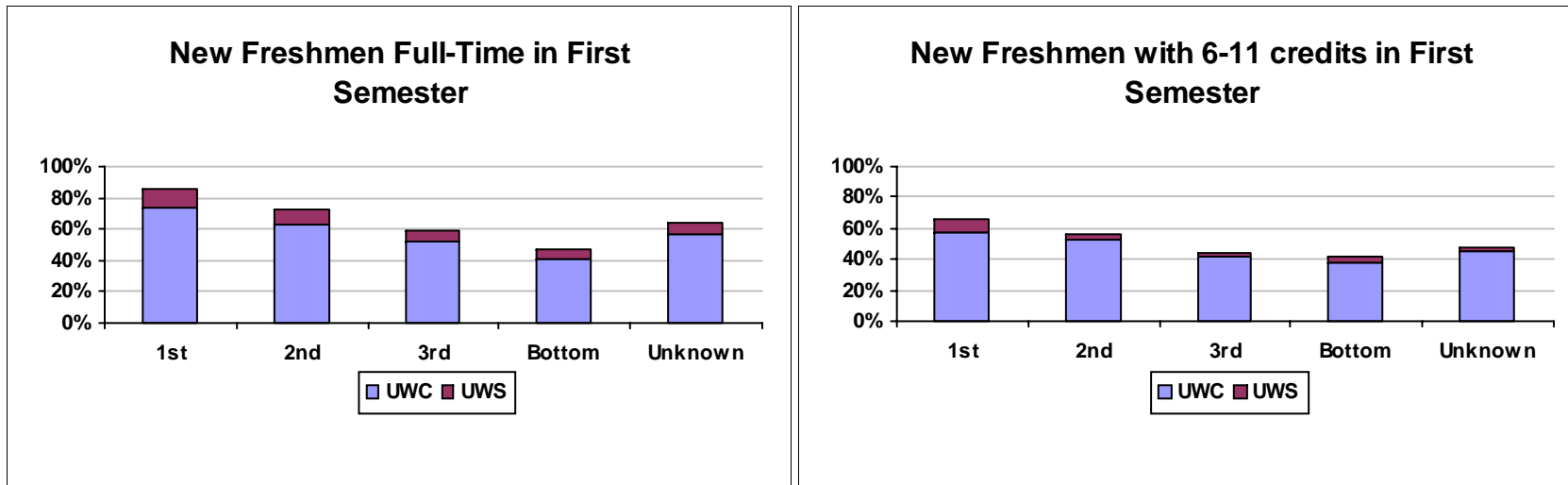


Note population sizes (Initial Counts) shown in the table above

Five Year Average Fall to Fall Retention for Fall Terms 2004-2008

		1st Yr. Fall Term	1st Yr. Spring		2nd Yr. Fall Term		
		Initial Count	% retained		% retained		
			UWC*	UWS**	UWC*	UWS**	Total
Full-Time	1st	2600	94%	1%	73%	13%	86%
	2nd	4949	88%	2%	62%	10%	72%
	3rd	5875	82%	2%	51%	8%	59%
	Bottom	2462	75%	1%	41%	5%	47%
	Unknown	2414	83%	2%	56%	7%	64%
6-11 credits	1st	83	83%	2%	58%	8%	65%
	2nd	250	71%	2%	52%	5%	56%
	3rd	484	68%	1%	42%	2%	44%
	Bottom	364	58%	1%	38%	3%	41%
	Unknown	514	66%	1%	46%	2%	48%

Students Retained to a 2nd Year (Fall to Fall) - Five Year Average



Note population sizes (Initial Counts) shown in the table above

Fall 2008 to Fall 2009

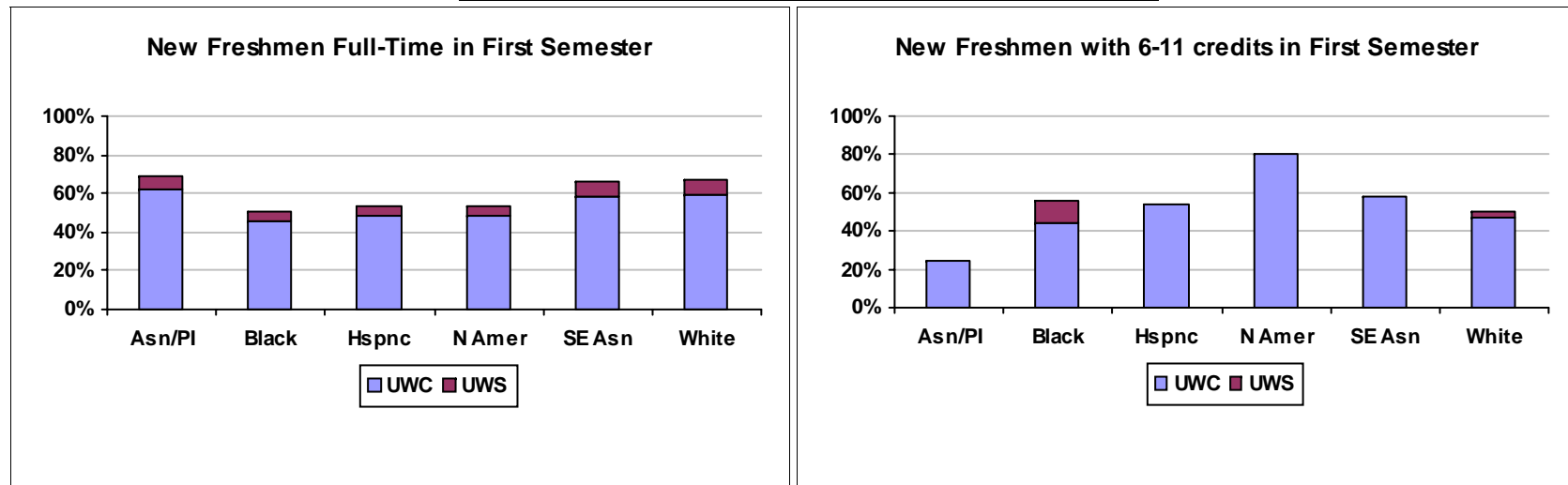
1st Yr. Fall Term

1st Yr. Spring

2nd Yr. Fall Term

	Initial Count	% retained		% retained		Total	
		UWC*	UWS**	UWC*	UWS**		
Full-Time	Asian/Pacific Islander	29	90%	0%	62%	7%	69%
	Black	59	83%	5%	46%	5%	51%
	Hispanic	85	81%	1%	48%	5%	53%
	Native American	41	78%	5%	49%	5%	54%
	Southeast Asian	108	87%	3%	58%	7%	66%
	White	3281	85%	2%	59%	8%	67%
	<hr/>						
6-11 credits	Asian/Pacific Islander	4	75%	0%	25%	0%	25%
	Black	9	67%	0%	44%	11%	56%
	Hispanic	13	77%	0%	54%	0%	54%
	Native American	5	100%	0%	80%	0%	80%
	Southeast Asian	12	67%	0%	58%	0%	58%
	White	259	65%	1%	47%	3%	50%

Students Retained to a 2nd Year - Fall 2008 to Fall 2009

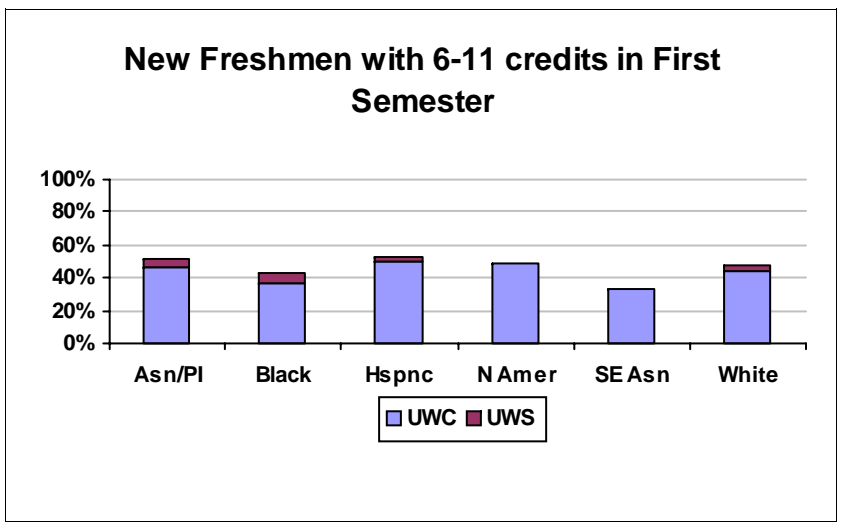
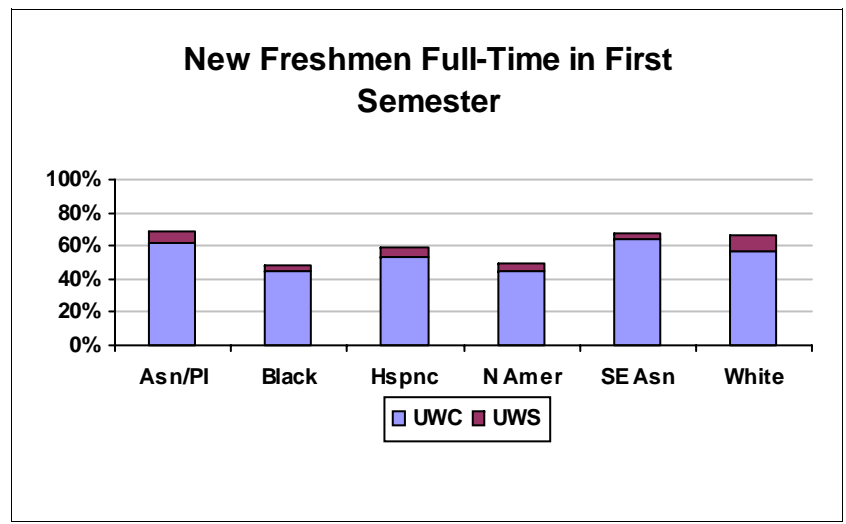


Note population sizes (Initial Counts) shown in the table above

Five Year Average Fall to Fall Retention for Fall Terms 2004-2008

		1st Yr. Fall Term	1st Yr. Spring		2nd Yr. Fall Term		
		Initial Count	% retained		% retained		
			UWC*	UWS**	UWC*	UWS**	Total
Full-Time	Asian/Pacific Islander	305	86%	1%	61%	7%	68%
	Black	228	79%	1%	45%	4%	49%
	Hispanic	366	81%	1%	52%	7%	59%
	Native American	134	73%	1%	45%	4%	49%
	Southeast Asian	321	91%	1%	64%	4%	68%
	White	16583	84%	2%	57%	9%	66%
6-11 credits	Asian/Pacific Islander	37	71%	0%	46%	5%	51%
	Black	47	58%	2%	37%	6%	43%
	Hispanic	67	73%	2%	50%	2%	52%
	Native American	13	83%	0%	49%	0%	49%
	Southeast Asian	35	58%	0%	33%	0%	33%
	White	1465	66%	1%	44%	3%	47%

Students Retained to a 2nd Year (Fall to Fall) - Five Year Average

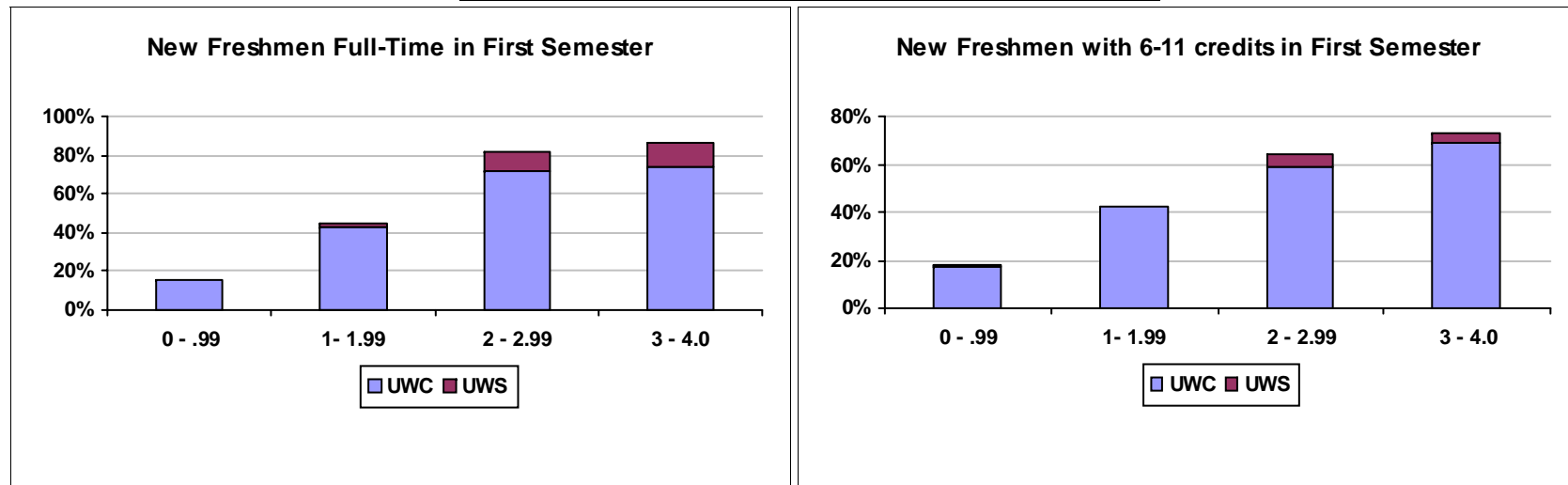


Note population sizes (Initial Counts) shown in the table above

Fall 2008 to Fall 2009

		1st Yr. Fall Term	1st Yr. Spring		2nd Yr. Fall Term		
		Initial Count	% retained		% retained		
			UWC*	UWS**	UWC*	UWS**	Total
Full-Time	0 - .99	564	47%	0%	15%	1%	16%
	1 - 1.99	667	85%	1%	43%	1%	44%
	2 - 2.99	1313	93%	3%	72%	10%	82%
	3 - 4.0	1128	95%	2%	73%	13%	87%
6-11 credits	0 - .99	93	31%	0%	17%	1%	18%
	1 - 1.99	33	58%	0%	42%	0%	42%
	2 - 2.99	75	80%	1%	59%	5%	64%
	3 - 4.0	106	91%	1%	69%	4%	73%

Students Retained to a 2nd Year - Fall 2008 to Fall 2009

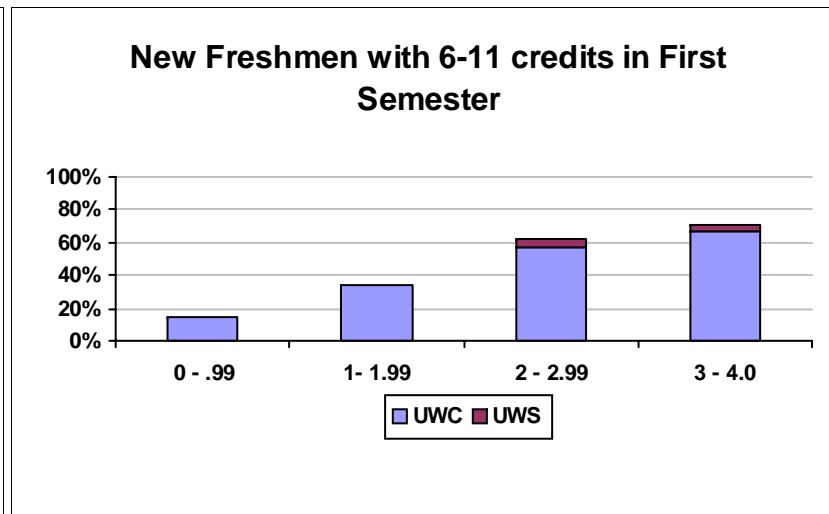
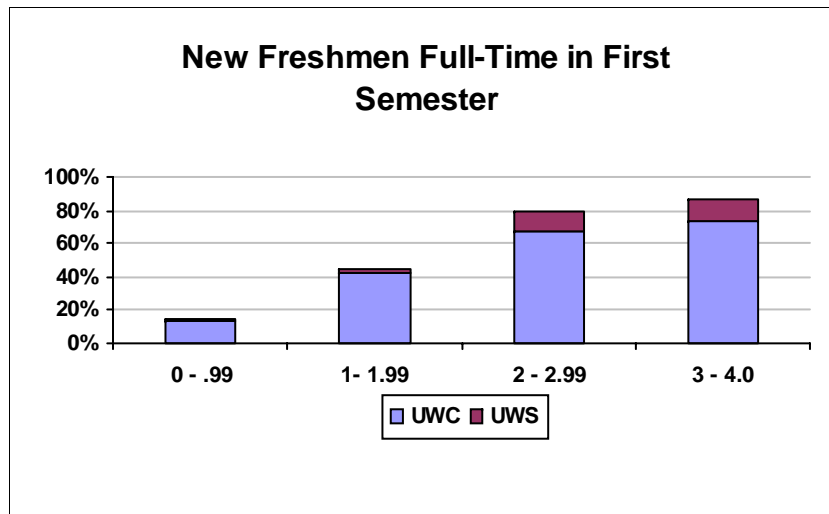


Note population sizes (Initial Counts) shown in the table above

Five Year Average Fall to Fall Retention for Fall Terms 2004-2008

		1st Yr. Fall Term	1st Yr. Spring		2nd Yr. Fall Term		
		Initial Count	% retained		% retained		
			UWC*	UWS**	UWC*	UWS**	Total
Full-Time	0 - .99	2817	43%	0%	14%	1%	15%
	1 - 1.99	3241	85%	1%	42%	2%	44%
	2 - 2.99	6710	93%	2%	68%	11%	79%
	3 - 4.0	5532	95%	2%	73%	14%	87%
6-11 credits	0 - .99	518	30%	0%	15%	1%	15%
	1 - 1.99	205	66%	0%	34%	1%	34%
	2 - 2.99	416	83%	2%	57%	5%	62%
	3 - 4.0	556	88%	1%	67%	5%	71%

Students Retained to a 2nd Year (Fall to Fall) - Five Year Average



Note population sizes (Initial Counts) shown in the table above